

# SPOOKEEEE

by Sandra Malone

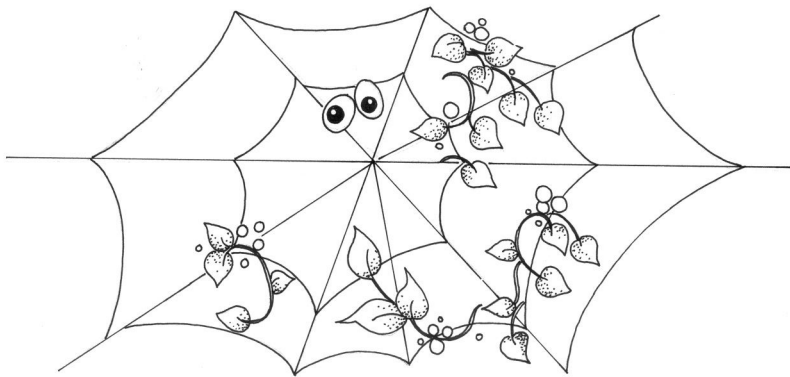


# SPOOKEEEE

by Sandra Malone

The design would be cute also on a small wooden bowl, paper mache' box, bucket, etc. I used a chunky candle that was about 3 inches tall.

(pattern shown is 50% scale)



## INSTRUCTIONS

**Preparation-** Using a soft cloth, wipe the candle with rubbing alcohol. When dry, mist the candle with a matte spray varnish. Allow to air dry and then sponge your paint on. Repeat with a second coat if needed. I used a mix of 3 parts Adriatic Blue and 1 part Purple. When dry, trace the design carefully trying not to indent the candle.

**Web-** Using a liner brush, paint the web Chambray Blue. Highlight a couple of areas using Lt. Ivory.

**Leaves-** The leaves are Medium Foliage Green, highlighted Apple Green. The linework is a mix of Apple Green plus a small amount of Lt. Ivory. Add dots using Tangerine and Calypso.

**Eyes-** Base-coat Lt. Ivory. Shade the left side with Dolphin Grey. The pupil is Black with a Lt. Ivory highlight dot.

**Finish-** Mist again with spray varnish. If you don't want to lose the design when burning your candle, then scoop some of the wax out around the wick area and set in a tea light to burn. Always keep burning candles away from small children or objects that might catch fire.

## DELTA CERAMCOAT COLORS

Adriatic Blue  
Purple  
Chambray Blue  
Lt. Ivory  
Medium Foliage Green  
Apple Green  
Tangerine  
Calypso Orange  
Dolphin Grey  
Black

## SUPPLIES

3 inch chunky candle  
Small sponge  
Stylus  
Tracing paper  
Light colored graphite paper  
Matte spray varnish

## BRUSHES

Loew Cornell  
#6 7300 shader  
#2 7350 liner